



P.O. BOX 581-D
WHEELING, ILLINOIS 60090

MONTHLY MEANDERS

JAN
DECEMBER, 1989



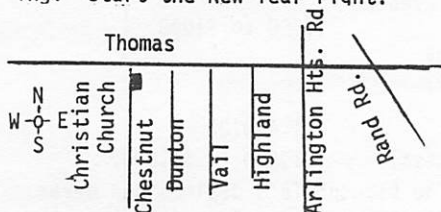
New Year's Day



Sunday, January 1 - 11 a.m. Bike and/or hike, depending upon the weather. Good roads for biking and hiking in the area. Brunch. RSVP for a "nose count".

Hosts for the day are Hans and Diane Predel, 1435 N. Chestnut Ave., Arlington Heights. 255-4029

This has always been a popular event for the Wheeling Wheelmen. There'll be a brief meeting and much socializing. Start the New Year right!



JANUARY

MEETING

WED. JAN. 11 - 7:30 P.M.

Wheeling High School
Elmhurst Rd. (Rt. 83) and Hintz

PROGRAM: Important meeting for all members! Discussion on our whole ride program.

1. How to develop and lead a ride; large group, sweeps, etc.
2. Panel discussion with experienced ride leaders.
3. Mileage program.

1989 RIDE PLANNING SCHEDULE

SAT. JAN. 21 - 1:00 P.M.

If you haven't already signed up with Aaron Tanzer for rides you want lead, or ride suggestions or routes you would like to include, come to Al Petty's, 389 Landis Lane, Deerfield. Any questions or info, phone Aaron at 323-3204.

Dues are due

Still a bargain: \$8 Individual and \$10 Family. Renewal form page 8.



by Keith Kingbay

Welcome into the New Year, may it be a happy one. Vitally important to a happy year is our health and the happiness of our family and friends. Nothing will keep *everyone* happy any more than our riding our bicycles safely.

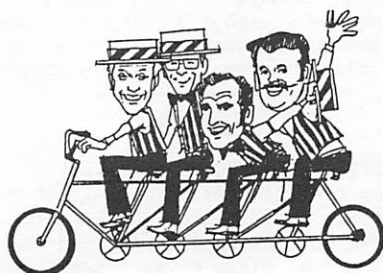
In the New Year we will all endeavor to counter the new high-speed performance cars. Let's not irritate them; we can't keep them off the road. We can, however, do much to keep the cars in line and improve our riding conditions.

May I suggest that those of you who are not members of the League of American Wheelmen join this national organization of, by and for bicyclists which has as its primary purpose the safety and well being of cyclists. Approximately 35% of our members already belong, however it would seem to me that we each should shoulder a part of the burden of our protection.

The League enters almost all phases of our cycling life without most of us being aware of it and, along with my safety articles, during the year I shall try to let you know how all these wonderful things that we take for granted are all interwoven.

Now we must all keep our fingers crossed so that winter will pass quickly and we can put our skis away and return to the true life of the open road.

HAPPY NEW YEAR!!



THE PREZ SEZ

The holiday season is here in full force and my wife, Diane, says that visions of bike accessories should be dancing in my head! In the midst of winter, each of us certainly misses being out on a club ride. Somehow, a wind trainer and a few X-country ski trips don't totally cut it.

But I am already thinking Spring and so are your Board members as we recently met to start planning 1989 club activities! The ride calendar is already filling out nicely. If you haven't got your request in yet to do that favorite ride, you had better call Aaron Tanzer quickly to get your choice of ride and date!

Lastly, a wealth of energetic volunteers makes any club successful. We have been fortunate to have many hard working volunteers to lead rides, work invitationals and assume club posts. There are many of you out there who feel as I do - you volunteer to help out in order to "pay back" the biking satisfaction you have gotten from the club. I urge you to attend the January 11 members meeting where we will

1. Talk about bicycling (hurray!!!)
2. Show you how easy it is to put together and lead a ride.

Beyond that I am still looking for a chairperson for the Harmon Hundred. Anybody with the slightest bit of organizational skill should be able to successfully manage the job. All the other critical Harmon posts have already been filled. We need a leader to oversee the process. While the basic Harmon Hundred framework is in place, there are some issues that need discussion, such as: possible change in the Harmon Hundred location, rerouting for more equal distance between sag stops and to avoid towns, food purchase controls, etc. We will discuss them at future meetings. Bring your thoughts and suggestions. Even a good thing can be improved with better ideas!

Hans Predel

President:	Hans Predel	255-4029
Vice-Pres:	Aaron Tanzer	323-3204
Treasurer:	Andy Dane	271-0808
Safety:	Keith Kingbay	249-8242
Membership:	Geri McPheron	824-5091
Editor:	Phyllis Harmon	537-1268
For check out:		
Bike Books:	Pat Marshall	564-0346
Bike Tools:	Chet Tobolski	362-7794

The Twelve Gifts of Christmas - Bikophile Style

by Dick Sorenson

Well - it's over for another year. How did you do? By now everybody is familiar with the "Twelve Days of Christmas" holiday carol. But even with plastic money, few people today can afford to buy their True Love even one gold ring, much less five; even bird lovers nowadays have to content themselves with canaries, rather than expensive turtle doves or partridges. The person who has some relation to the bikeophile (i.e. the lover of bicycling) is in the unenviable position of being the link between fantasy and reality through the medium of Christmas. I don't envy your precarious annual situation. Your Clausian task was certainly a difficult one.

Selecting a gift that will make the bike glow instead of glower, required that you browse through various bike shops and scour the bike catalogs and recent biking magazines to check out the latest offerings.

The obvious choices of handy bike tools, a repair stand, an indoor resistance trainer, and clothing are always good ones. By the way, if you opt for clothing, keep in mind that the highly visible neon colors are "in" for that conscious bike in 1989. Prepaid dues for the Wheeling Wheelmen or League of American Wheelmen are always nice presents. Anything with the name "Campagnolo" stamped on it was certain to produce a happy face on Christmas day. One of the best gifts, for that bare-


headed friend or spouse, the one that says, "I really care about you", is the bicycle helmet (about \$40 to \$60).

Here are a few specific suggestions for next year's Santa:

1. Freewheel cog cleaning brush about \$3.50
2. Rear Rack Cover (it prevents that tell-tail black stripe across your back on rainy days) about \$4.00
3. Sloane's Handy Guide to Bicycle Repair (a pocket-sized, carry along manual) about \$6.00
4. Subscription to a bicycling magazine or dues for Bikecentennial or Bicycle Adventure Club about \$10.00 to \$25.00
5. Music from the Tour de France soundtrack cassette tape about \$11.00
6. Bicycling Magazine's Complete Guide to Bike Maintenance and Repair about \$13.00
7. Freewheel Injector, a neat way to lube the freewheel (grease not included) about \$25.00
8. The Cycling Experience, an Exciting 52-minute video taking you from Big Sur to Mt. Whitney and Death Valley about \$30.00
9. Italian Regal Girardi lizard skin saddle (a bit exotic) about \$140.00
10. Fat tire (mountain, off-the-road, or all-terrain) bike, to ride on even those snow-packed days. \$300 to \$1000.
11. Follow the real Tour de France by bicycle in July, 1989, 12 days, "Breaking Away Bicycle Tours" (213-545-5118) \$1,400.00
12. Tandem (for those into togetherness) \$1,500 to \$3,500.

How's that for a variety of ideas? The bikeophile's desires can never be completely sated, but a Christmas gift or two is guaranteed to keep the fever at a controllable level.

I just hope Ardie reads this.



MARK THESE DATES...
GEAR '89
 June 16-19
NATIONAL RALLY
 June 30-July 4

GEAR '89 Saratoga Springs, New York

Based in downtown Saratoga Springs and at Skidmore College June 16-19. 25 rides from 12 to 120 miles through farmlands, along Hudson River and into the Adirondack Mts. You'll have your pick of terrain. Also workshops, exhibitions, entertainment, special tours and more!

Many activities will take place on campus; other activities will be spread throughout the city. Due to the small size of Saratoga Springs, Participants will have convenient access to all events. Hosts: Mohawk-Hudson Wheelmen. Registration form: GEAR '89 Saratoga, PO Box 127, Albany NY 12260. Stamped self-addressed envl.



1989
"BEACH TO BAY"
 League of American Wheelmen
NATIONAL RALLY
 June 30-July 4, 1989

Bike the Eastern shore of Maryland between Chesapeake Bay and the Atlantic! Salisbury State Univ. Hdq.

CYCLIST MAGAZINE - THE VIDEO

For those of you with cable TV, a half-hour video version of Cyclist Magazine is broadcast on the Tempo Channel, Sundays and Thursdays at 8 p.m. and Tuesdays at 10 p.m. Like its print counterpart, a new version of Cyclist is broadcast every month.

FOR SALE

FOR SALE: TREK 820 Mountain Bike ridden by little old school teacher six times. 19" frame. \$375.00 You save sales tax, accessories and new model price. Kitty Hayes 945-5018.

Rides Re-ridden

THE TURKEY RIDE 1988: With dark skies and a rainy weather report, eight riders started out from Devon and Milwaukee Avenue on the annual Turkey Ride, the last official club ride of 1988. Everyone was pleased when the temperature rose to 48° and the wind and rain both stopped. Along with ride leader Jerry Hug were Harold Richman, Elliot Kanner, Steve Manrose, Frank Prout, Howard Paul, Larry Kohn and Justin Hinsel. Another rider saw the precision touring line on the trail and tagged along for ten miles of the North Branch Trail. This year's ride proved to be more successful because the 10:30 a.m. starting time allowed the pack to stop in Glencoe at Harry's Restaurant and Deli for lunch. Home-made soups were a hit with everyone. The special return trip, which has only been ridden by a few Wheeling Wheelmen, took Sunset Ridge Road and a secret foot bridge into the town of Golf before rejoining the bike path at Lehigh and Dempster for a return to the starting point. Everyone was happy to get one more ride in before the holiday.

Jerry Hug



Schedule

CROSS- COUNTRY SKI SCHEDULE

- Sat. Jan. 7 10:00 a.m. Deer Grove.
Quentin north of Dundee Road,
Palatine. Bob Illy - 453-4129.
- Sat. Jan. 14, 10:00 a.m. Dan Wright
Woods, corner of Everett and St.
Mary's Roads, Lake Forest. Pat
Marshall - 564-0346.
- Sun. Jan. 22, 10:00 a.m. Ryerson
Conservation Area parking lot.
Riverwoods Road west of Portwine
Road, Deerfield. Al and Lynn
Petty - 948-7288.
- Sat. Jan. 28, 10:00 a.m. Skokie
Lagoon, Tower Road parking lot
(east of Edens Expy.) Winnetka.
Howard Paul - 824-2941.

For all ski trips it is advisable to
bring a bagged lunch or a snack with
you.



This winter there will be Show
'N Go bike rides every Sunday,
weather permitting. Meet at
noon at the Mt. Prospect train
station (Rt. 83 and Northwest
Hwy.) For more information,
contact Woyteck Morajko - 392-0530.



23rd WINTER RENDEZVOUS

March 4-11, 1989
Homestead, Fla

This is a very popular week for a
number of Wheeling Wheelmen. For a
Registration Form write to The Dr.
Paul Dudley White Bicycle Club, P.O.
Box 1155, Homestead, FL 33030.

Enjoy a week of beautiful bicy-
cling in sub-tropical Florida, com-
plete with warm, sunny weather, palm
trees and flowers in late winter!

Daily rides to Bayfront Park, pic-
nic ride topped off with a delicious
stop at Knauss Berry Farm, Black
Point Ride, Monkey Jungle, Anhinga
Trail, Railroad Museum/Metro Zoo,
Alabama Jack's and, of course, there
are Early Bird Rides each morning.

Evenings feature Ice Cream Social,
Wine and Cheese Party, and Banquet
at the Homestead Air Force Base.

Also you can earn your Sanctioned
L.A.W. patches for 25, 62 or 100
miles to the Everglades. And March
11 is a fun day cruise on Discovery
I, largest 1-day cruise ship afloat.
\$55 Registration by Feb. 15 incl.
T-shirt. Cruise addl. \$39.00. New
Hdqt's. Park Royal Inn. Motel list
in brochure. Info: 305-661-7552 p.m.

ELK GROVE BICYCLE CLUB'S

FIRESIDE WINTER RIDE

SAT. JAN. 21, 5-10 P.M.

This is a fun event! Bring your
exercycle, Wind Trainer or rollers
and also hot dogs to roast over the
fire! Chili supper.

Pedal as you watch a wide variety
of bicycling films. \$3. to Jan. 18;
\$5. at door. RSVP 437-8780.

LIONS PARK COMMUNITY CENTER

180 Rev. Morrison Drive

Elk Grove Village.

Make your check payable to: Elk
Grove Bicycle Club and mail to the
club at Elk Grove Park District,
499 Biesterfield Rd., Elk Grove
Village, IL 60007.

Proceeds from this event are used
to provide signs for the Elk Grove
Bicycle Route.

Information Days 437-8780

Evenings 593-7945

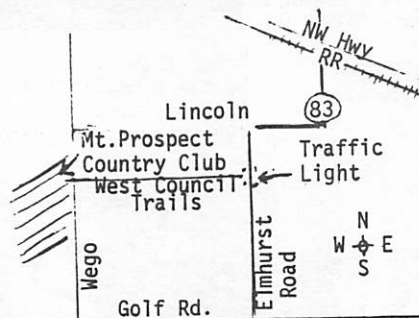
MT. PROSPECT BIKE CLUB

STEVEN GAY SPEAKER FEB. 8

The Wheeling Wheelmen have been
invited to hear Steven Gay speak of
his participation in the Spenco 500,
considered as one of the four tough-
est cycling events in the world.

Steven spoke to the Wheeling Wheel-
men earlier this year about his ex-
perience in participating in the
Race Across America - we all enjoyed
his talk, so this, too, should be
interesting.

The program is at 7:45 p.m. at
the Mount Prospect Country Club



Bicycle Maintenance Repair Class

District 214, in its Spring Educa-
tion Brochure, is offering an 8-week
class starting Feb. 13 on Mondays
7 to 10 p.m. Cost is \$40 for 24 hrs.
of class time. Dist. 214 Continuing
Education office number is 437-4600.

Instructor for this course is
Frank Dypold who has been teaching
the course for 15 years. "If you
are interested in bicycle mainte-
nance and repairs, this is the class
for you!" Knowing how your bicycle
works gives you confidence on the
road.

Ride Notes

By Aaron Tanzer

I am currently putting together
the 1989 rides schedule. Due to our
growth in recent years, our goal for
this year is to schedule a minimum
of three rides per weekend from St.
Patrick's Day until the end of Octo-
ber. In order to accomplish this
goal, we are seeing more leaders and
more new rides (especially leisure
class rides) for this coming year.
There are many of you who will make
fine ride leaders but are afraid of
leading for fear of something going
awry. Nevertheless, I would like to
encourage you to volunteer to lead a
few rides anyway. All of us on the
Board will do everything we can to
help new leaders feel comfortable
with preparing for and running a
bicycle ride.

To this end, part of the January
11 meeting will be devoted to a ride
leaders' workshop. We will be talk-
ing about what is expected by the
Wheeling Wheelmen of a ride leader
and other ride leader's will give
tips from experience on how to handle
the ride. Some of the subjects we
will be discussing will include how
to handle a large turnout, scouting
tips and advantages and disadvan-
tages of leading from the front ver-
sus leading from the back. We think
that veteran and rookie ride leaders
alike will find this workshop inform-
ative.

For those interested in leading a
trip, a handout listing rides the
Wheeling Wheelmen currently has on
file will be available at both the
New Year's Day party and the January
meeting. If you wish to lead a ride,
please call me at 323-3204 (note that
this is a new number). Also, we
will be having our annual ride
scheduling meeting on Saturday, Jan-
uary 21 at 1 p.m. at Al Petty's,
381 Landis Lane, Deerfield - phone
948-7288. Pizza and other refresh-
ments will be served.

Belgium and Luxembourg Tour

Tom Crum, of Triton College, is
leading a 2-week bicycle tour May
16-30 of Belgium and Luxembourg for
\$1,599.00 plus tuition for HTH 210
(Health Analysis and Improvement) or
HTH 213 (Lifestyle for Health and
Fitness).

Cost includes air fare, luggage
handling (1 suitcase-1 bike box),
tour escort, lodging, continental
breakfast and dinner, luggage trans-
port, maps, cue sheets, etc.

First come-first served. \$200.00
downpayment, final balance March 6.
Info: Tom Crum - 456-0300 Ext. 358
or 840 between 9 a.m. to 3 p.m.
or evenings at 941-8785.

Annual Banquet – Cotillion Banquet Hall

Photos by Phyllis Harmon



Lilian Russell, Banquet Chairman

A record number of 97 people attended our Annual Banquet. The Cotillion Banquet Hall in Palatine was ideal for dining, our program and fashion show, as well as dancing later.

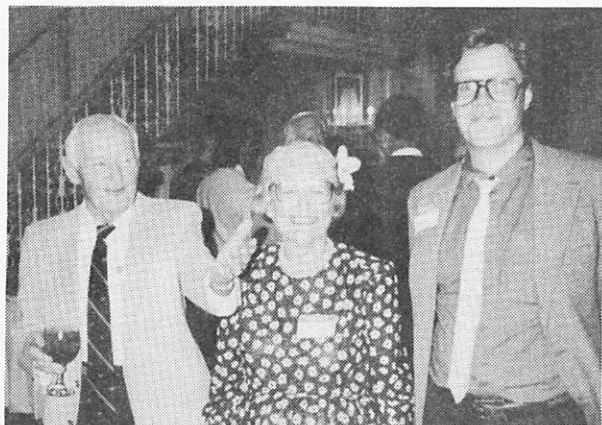
Many thanks to Lilian Russell for her excellent planning and serving as a gracious hostess.

Our members modeling the latest in sports attire was highlight of the evening.

Everyone had many chuckles during Al Petty's "Roast" - a complete surprise!



Outgoing President Al and Lynn Petty. We really took Al by surprise with a "Roast" - several of us had some rib tickling comments to make and even Lynn told of his 108 bicycle shirts!



League of American Wheelmen officers: Keith Kingbay, Illinois Director; Phyllis Harmon, Honorary Director, and John Cornelison, Executive Director.

MOST IMPROVED RIDER CATEGORY
Award went to Hans Predel, our new club president, and Cathy Zoch, who was unable to be present. New members this year, both made tremendous progress!



Left: Our new Treasurer, Andy Dane, will keep our financial records in order.

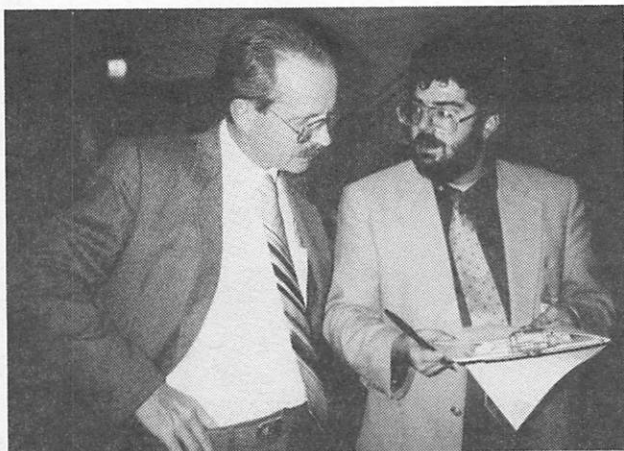
Many thanks to outgoing Treasurer, Betty Vargas for her many hours of work, especially during the Harmon Hundred!



Women with top 1988 club mileage: Gee Cunningham, 1400 miles; Debbie Dick, 1531 miles; Geri McPheron, 1656 miles; Cathy Zoch (not pictured) 1793 miles, and top mileage to Jane Newell, 1921 miles. Congratulations to you all!



Top Mileage Men: Highest, Jack Van Es, 2868 miles; Woyteck Morajko, 2649 miles; Kurt Schoenhoff, 2099 miles; Joe Tobias, 1955 miles and Roy Erikson, 1806 miles. Great riding, fellows!



Duane Regenfuss and Aaron Tanzer checking over rides for 1989 schedule.

It is always fun and a challenge to see the bicycling companions from all our season rides show up dressed in their Sunday best, sans helmets and dark sun glasses. Sometimes it takes one or two double takes before we are sure who we are looking at!

AWARDS

Aaron Tanzer did a great job keeping track of mileage for the year and presenting trophies and awards.

The Most Innovative Ride awards were handed out to Andy Dang (Botanic Bicycle Blast and Barbeque with Beer and Brats picnic), Kurt Schoenhoff (Apple Cider Ride and organizing the Michigan tour) and Sue McPheron (Love in the Snow, Valentine's X-country ski trip and Wayne-Bartlett Ride).



Carolyn Wells of Milwaukee and Elliott Kanner



John Nelson, Sue McPheron, Ron and Geri McPheron



Len and Bobbi Brenner



Mike Milton



Don and Elida Derebey



Herb and Mary Jensen



Fran Green Kelner and hubby, Doug.



Mary and Fran Giuffre



Jim and Barbara Hansen



Dale Youssi, Keith and Rosetta Kingbay, Alberta Youssi and Bill Lorenzen.



The Three Musketeers: Bill Lorenzen, Bill Erikson and Jack Van Es



Kaete Schoenhoff, Cindy Cochrane, Debbie Wistar, Ralph Cochrane.



Phillip and Brenda Hursthouse, mom Phyllis Harmon and grandson Matthew Hursthouse - 13th birthday!



Left: Bob Illy, Lisa Gerhold, Mark Schorra and Hans Predel.

Lisa designed our very attractive new logo and design on our mugs given to ride leaders and sweeps.

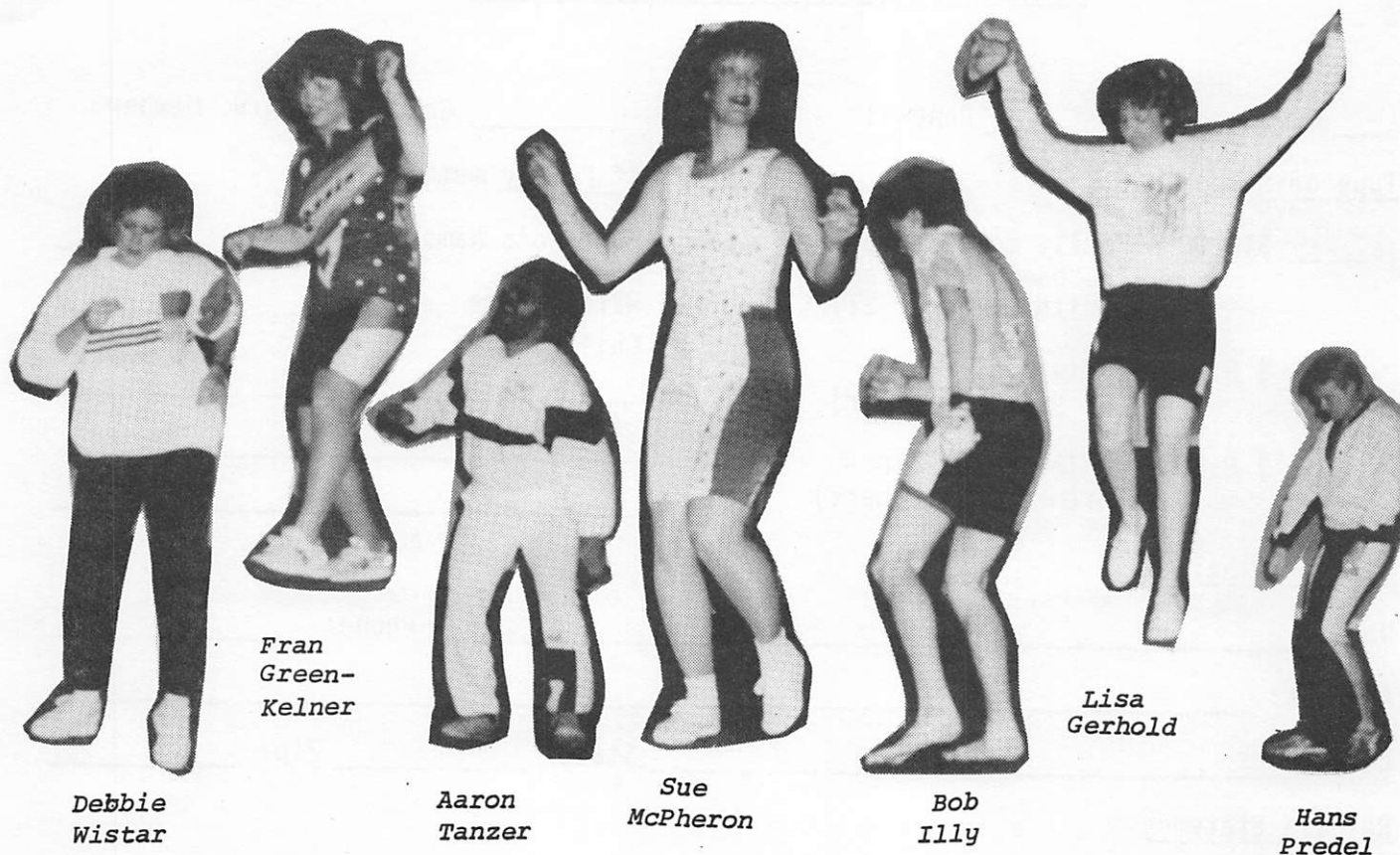
Right: Dawn Weisman and Chuck Brenmark



Bill Marshall, Howard Paul, Pat Marshall and Lois Paul.



Outgoing President Al Petty, Diane and Hans Predel, new President.



Members Model At Banquet

Sportswear supplied by
R R B Cycles, Winnetka

Top Mileage For The Year

WOMEN	MILES
Jane Newell	1921
Catherine Zoch	1793
Geri McPheron	1658
Debbie Dick	1531
Gee Cunningham	1400
Phyllis Harmon	1214
Carol Passowic	1153
Cindy Cochrane	1082
Fran Green-Kelner	959
Pat Marshall	774
Joyce Lewis	705
Lois Paul	683
Kaete Schoenhoff	559
Bobbie Brenner	543
Lilian Russell	543
Lucy Wathen	524
Ruth Ryan	514
Debbie Wistar	496
Lynn Petty	462
Peggy Heslinga	459
Jenny Grant	422

MEN	MILES
Jack Van Es	2868
Woyteck Morajko	2649
Kurt Schoenhoff	2099
Joe Tobias	1955
Roy Erikson	1806
Bill Lorenzen	1792
Dick Ryan	1540
Jim Grant	1518
Andy Dane	1468
Chuck Brenmark	1274
Hans Predel	1219
Howard Paul	1200
Ron McPheron	1184
Keith Kingbay	1178
Mike Skalka	1064
Mel Robinson	1022
Aaron Tanzer	987
Al Petty	852
Anton Zoch	788
Elliott Kanner	750
Bob Illy	746

MEN	MILES
Rich Wemstrom	746
Bob Flanagan	731
Dennis Braun	721
Merritt Lewis	721
Bill Bergeron	720
Roger Thauland	689
Steve Manrose	660
Kim Stanley	638
Ralph Cochrane	635
Richard Lentz	587
Joel Jaffe	573
Mike Milton	564
Ed Addison	550
Jack Russell	543
Bob Savio	538
Phil Badame	501
Duane Regenfuss	455
Don Davidson	432
Al Berman	400

These are the final mileage totals of every one who rode over 400 miles in our 1988 riding season.

These mileages are cumulative distances ridden by club members from St. Patrick's Day through Oct. 16. Thank you for riding with us; hope you enjoy riding with us even more this year!

Aaron Tanzer

MEMBERSHIP APPLICATION AND RENEWAL FORM

Date _____

____ New Membership ____ Renewal

____ Check if L.A.W. Member

Type of Membership:

- ____ \$10.00 - Family membership
 (Husband, wife, and
 children under 21)
- ____ \$ 8.00 - Individual
 (16 years or older)
- ____ \$ 8.00 - Junior (Under 16 -
 Parents not members)

If Family membership:

Husband's Name _____

Wife's Name _____

Children _____ Age _____

Please Print:

Name: _____ Phone: _____

Address: _____

City: _____ State: _____ Zip: _____

Release Statement:

In signing this release for myself (or the named applicant if under the age of 18) I acknowledge that I understand the intent hereof, and hereby agree to and absolve and hold harmless the Wheeling Wheelmen bicycle club and the League of American Wheelmen, and their officers and members, respectively, in any way whatsoever, singly and collectively from and against blame or liability for any

injury, misadventure, harm, loss, inconvenience, or damage suffered or sustained as a result of participation in Wheeling Wheelmen rides or in any activities associated therewith. I hereby consent to and permit emergency medical treatment in the event of injury or illness. I shall abide by traffic laws and regulations and practice courtesy and safety in cycling.

Signature

Signature of parent or guardian
(If applicant is under 18)

Signature of spouse (if Family membership)

Mail with payment to: WHEELING WHEELMEN
P. O. Box 581-D
Wheeling, IL 60090

