

# Monthly Meanders

**MAY 1994**



**Wheeling Wheelmen**

**P.O. Box 581-D  
Wheeling, IL  
60090**

**MAY MEETING:**  
THURSDAY THE 5TH AT  
WHEELING HIGH  
SCHOOL (RT. 83 & HINZ  
RD.). MEET IN THE  
CAFETERIA AT 7:00  
P.M.

## **INSIDE:**

### **St. Pat's Results**



### **Rides, Rides, Rides**



### **The Top 10!!!**



### **Bits and Pieces**



### **Re-Cycled**



**'till next time:  
CARPE DIEM! I**

## **Prezsez**

by Reid French

Things are looking green again, and spring fever is upon us. I'm like a key that needs a little turnin'. How about turnin' those cranks!! With the advent of nicer weather, I hope that all of you are considering one of the April rides, or perhaps one of the new development rides organized by Wayne each month.

I was sorry to learn that John Loesch resigned as Safety Chair due to personal reasons. John, thanks for all of your hard effort and enthusiasm. Your informative columns will be sorely missed.

I was very pleased to learn that we had such a fantastic turnout for the St. Pat's ride! Joan Segedie deserves my next winning lottery ticket for doing such a great job. (Joan, can I borrow a dollar?) Ride organization is truly a big effort and kudos to all that assisted this year. We still have another very large event (the Harmon) that Ron and Judy Hattendorf have been slaving away at and

they could use your help. Please consider contributing some of your time to these worthwhile events. There are many fine people to meet, rides to talk about and things to learn!

A reminder that club meetings will continue to be the first Thursday of the month. We attempted to change to the second so we could announce the club speakers in advance of the meeting, but the high school cannot accommodate us.

Some of the great upcoming programs include the following:

- \* A Bike Repair Clinic in May.
- \* Jim Hochgesand, publisher of "Hiking & Biking in Lake County, Illinois."
- \* Kim Ortman, skin care and treatment.
- \* Phyllis Harmon, slide presentation.

Most of the programs start at 8:00 P.M. after the regular meeting. How about coming on over to the high school and saying hey? We promise not to pick on anyone the first night. Keep the rubber side down.

Reid

## **Safety First**

by John Loesch

With the change to daylight savings time, it is now light enough to resume a full schedule of cycling. We all like to "hop on our wheels and ride". Cycling can be a freeing, healthy, spiritual, practical, exhilarating way to travel from point A to B and rediscover what a marvelous mechanism the human body is. It can also be very dangerous, if you ride with a blithe disregard for the inherently indifferent nature of the physical universe and the sometimes malicious behavior of your fellow "sapiens".

I propose that premeditation is well worth the mental effort involved. In other words, think about what you're doing and take responsibility for what you do.

There seems to be a disturbing trend in American life; a demand that we be protected against all possible dangers at all times, especially if it might result in a risk of death. In the past, there has been an acknowledgement of risk and a

willingness to proceed in spite of that knowledge. Our civilization is built on the efforts of pioneers that did things that they could not know were safe, and in many cases they knew these acts were dangerous. If all of our ancestors had insisted on Absolute Safety in everything they did, we would probably still be living in caves.

The corollary that follows is that if something bad does happen, it must be SOMEBODY'S fault and that, oh boy, are they going to pay. This can be considered a truism if one does expect that Absolute Safety is a right that requires no personal responsibility. A recent court decision from New Jersey provides a case in point. A 17 year old was riding home from his part time job around midnight. His bike had reflectors, but no lights. He was struck by a Jeep turning left, leaving him partially paralyzed and facially disfigured. He sued the bike company. The argument stated that the bike company was negligent because it did not supply a headlight as standard equipment and failed to warn that it's unsafe to ride at night without one.

Continued on page 3

## RIDES, RIDES, RIDES

*Tuesday and Thursday night rides* depart from Daniel Wright School in Lincolnshire (on Riverwoods Road, North of Rt. 22) at 6:00 P.M. Rides leave promptly, so be sure to allow adequate travel time. For further information call Ralph at 708-367-6472 (leave a message).

*Wednesday night rides* depart from the White Hen parking lot at the northern boundary of Lake Barrington Shores townhome community which is located at the SW corner of Hwy 59 and Kelsey Rd. approx. 2 miles North of Rt. 22. For further information call Judy Curtis at 708-381-5039.

On the first and second Saturday of the month *the rider development rides* for beginning cyclists leave from Wauconda Orchards at 9:00 A.M. sharp. Call Wayne at 708-394-1027 for further information.

## OTHER EVENTS

On Saturday, June 18th, the Bike, Walk, and Roll will be held to benefit The American Cancer Society.

TIME: 9:00 A.M.-12:00 P.M.

PLACE: Harper College, Algonquin and Roselle Roads in Palatine.

For further information contact the American Cancer society Office at 708-358-3965.

### TOP TEN MILEAGE

#### MEN

- 1) John Yuill...199
- 2) Wayne Segedie...160
- 3) Ralph Pedraja...155
- 4) Woyteck Morajko...149
- 5) Al Berman...134
- 6) Bob Szumal...101
- 7) Bill Bergeron...99
- 8) Walter Rosenbaum...79
- 9) Joe Lippere...73
- 9) Ron Hattendorf...73
- 9) Ed Addison...73
- 9) Bob Savio...73

#### WOMEN

- 1) Ella Shields...269
- 2) Joan Segedie...161
- 3) Dolores Fischer...155
- 4) Lottie Dolce...140
- 5) Carol Passowic...101
- 6) Virginia Savio...73
- 6) Judy Hattendorf...73
- 8) Jill Janouy...60
- 9) Bev Pobuda...41
- 10) Pat Marshall...39

## RE-CYCLED

*Saturday March 26, David Park School, Zion, Ill.*

Six intrepid cyclists- Woyteck Morajko, Wayne Segedie, Andy Dane, Joan Segedie, Alex Halamaj and Ella Shields, cast the weather reports aside and showed up for Woyteck's 49 mile "Spring into Wisconsin" ride. We looked at the gray skies one more time and decided we could beat the rain.

At 28 miles we realized it was time to take a food and (real) bathroom break and just happened upon the Paris School which was open. It was our lucky day since they were having a big spaghetti dinner at 4:00 p.m. With the aroma of spaghetti in the air Joan talked with the chairwoman who offered an invitation to prepare an early dinner for us.

After a summit meeting it was unanimously agreed that their hospitality would definitely be accepted since we were starving. No wine was available with our meal, but for the bargain price of \$4.00, we had all-you-could-eat platters of spaghetti, sauce, meatballs, and even our choice of homemade desserts!

We left happy, full, and content for the remainder of the ride!

*submitted by Ella Shields.*



### Club Officials

President	Reid French	815-338-3381
V.P./Rides	Ralph Pedraja	680-7379
Treasurer	Lotti Dolce	398-3957
Membership	Lin Costagli	364-4569
Safety	John Loesch	312-225-0990
Secretary	Ella Shiells	312-478-1625
Newsletter	Dolores Fischer	740-0647
Bike Books	Bill Bergeron	382-4704
Harmon	Judy & Ron	
Chairpersons	Hattendorf	362-5997

(708 area code unless noted)

Send stuff to: Dolores Fischer, 1408 N. Hickory, Round Lake Beach, Il. 60073 . Contact Lin with any address changes .

Government Relations Advocates: Bob & Virginia Savio 438-8066 & Al Berman 541-9248.

Wheeling Wheelmen Rideline 708-367-6472



# Wheeling Wheelmen 1994 May Ride Schedule

Day	Time	Ride Name	MIs	How To Get There	Starting From	Leader
1-May Sunday	9:00	Wauconda/TwinLakes	50/ 75	Starts from Wauconda Orchards, Gossell Rd, 1/2 mile off Fairfield, north of Rte 176	Wauconda Orchards	Lester Flemming 255-0105
7-May Saturday	9:00	Brookfield Zoo	50	Busse Woods Golf Rd West of Algonquin Rd (62), east of Rte 53.	Busse Woods	Al Dargiel 312-685-7708
7-May Saturday	11:00	Glacial-Drumlim	40	Take 294/94 north to Milwaukee I94 bypass, 94 west to Waukesha go south (left) on 164 str on 18 west at Morland, str on North at Madison right on St Paul right on McAuthur. Purchase Trail Pass at Quick Trip. Mountain bikes recommended.	Glacial-Drumlim Trail Waukesha	Delores Fischer 367-6472
8-May Sunday	9:00	Paris School	35/ 50	Starts from Paris School, Paris Wisc. Take 294 north to 94, exit 142 west. Go to County D turn left to school.	Paris School	Ralph Pedraja 367-6472
8-May Sunday	9:00	Lake Forest Ride	40	Starts from Oak Grove School, take I294/94 to exit Rte 137. Go west to O'Plaine Rd. Go to school.	Oak Grove School	Al & Cindi Schneider 696-2356
14-May Saturday	8:00	Lenore Goldman	21/ 40/ 62	Pre-registration required by May 7th.	Deicke Park Huntley	Invitational Kathy or Glenn 864-8641
15-May Sunday	9:00	Wall to Wall	100	Take Rte 12 north to H east on H into Genoa City WI. follow H to Fellows Park.	Fellows Park, Genoa City	Fred & Chris Schroeder 359-5624
15-May Sunday	8:30	Not Quiet Wall to Wall	75	Take Rte 12 north to H east on H into Genoa City WI. follow H to Fellows Park.	Fellows Park, Genoa City	Rick Amopolin 520-3136
15-May Sunday	9:00	Wauconda/Bull Valley	46/ 33	Starts from Wauconda Orchards, Gossell Rd, 1/2 mile off Fairfield, north of Rte 176	Wauconda Orchards	Lin Costagli 364-4569
21-May Saturday	9:00	Tour Of McHenry County	75	Evergreen School at the end of Washington St in Union	Evergreen School in Union	Al Berman 541-9248
21-May Saturday	9:00	Covered Bridge II	63	Starts at Kilder School and tours through 12 communities & goes through 4 covered bridges	Kilder School	Howard Bronson 475-1198
22-May Sunday	7:00	Windy City Sports Bike Pizza Ride	15/ 25/ 40/ 60	Take I90 west to Randall Rd , south exit to South St, east 6 blocks to Second St ,2 blocks south to Campus.	Elgin Community College	Invitational
28-May Saturday	9:00	Loops Of McHenry	60	Starts McHenry County College, Rte 14 one mile past Rte 176, Crystal Lake.	McHenry County College	Rob Schaller 854-0153
28 To 30 May Sat to Mon		Janesville Weekend		See the newsletter for details. you can either motel it for all three days or join the group for a single day ride.	Janesville WI.	Woyteck Morajko Carol Passowic 392-0530

## Wheeling Wheelmen Membership Application

Name: \_\_\_\_\_ Address: \_\_\_\_\_

City: \_\_\_\_\_ State: \_\_\_\_\_ Zip: \_\_\_\_\_ Phone: \_\_\_\_\_

New Member? \_\_\_\_\_ Renewal? \_\_\_\_\_ L.A.W. Member? \_\_\_\_\_ Date: \_\_\_\_\_ Age: \_\_\_\_\_

### Membership Pledge:

I hereby agree to operate my bicycle in a manner that is safe to me and those around me, to observe all Rules of the road, and conduct myself in a manner that will be complimentary to the sport. I release and waive all claims for negligence against the Wheeling Wheelmen, its officers and members, for all damages incurred at, or associated with any Wheeling Wheelmen activity for myself, my heirs and executors.

If you are a family, please provide:

Spouse's name: \_\_\_\_\_

Children's names and Ages \_\_\_\_\_

Applicant's signature (Parent's signature if a minor) \_\_\_\_\_

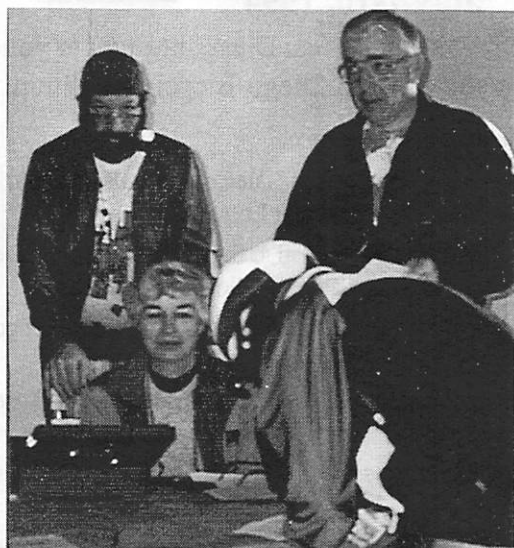
Spouse's signature \_\_\_\_\_

Family Dues...\$15.00  
Individual...\$12.00

Mail with payment to:  
Wheeling Wheelmen  
P.O. Box 581-D  
Wheeling IL 60090



# 550 ON ST. PATRICK'S DAY RIDE



Judy and Ron Hattendorf, handling registration.  
Rich Arnopolin in rear.



Dick Bredin of Wauconda  
Apple Orchard.



Chairperson Joan Segedie



Three riders checking cue sheet before they ride.  
After a tough winter, everyone enjoyed a perfect spring day!

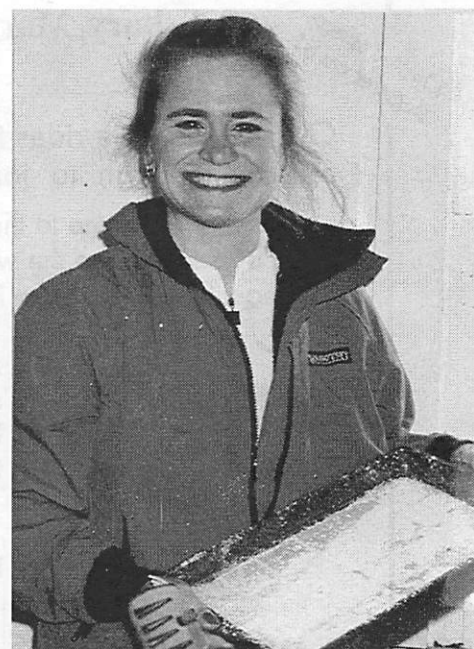
*Photos by Phyllis W. Harmon*



Village Cycle Sport - volunteer - keeping bicyclists on  
the road.



Newsletter Editor Dolores Fischer and Club Secretary Ella Shields.



Membership Chairman Lin Costagli

The League of  
American Wheelmen  
Proudly Presents ...

# L.A.W. NATIONAL RALLY 94

San Diego, California

July 7-10, 1994

Join us for a four-day celebration of cycling in sunny San Diego, brought to you by the League of American Wheelmen and the San Diego Bicycle Coalition!

- More than 25 of the most outstanding rides in the San Diego area.
- Ride along the magnificent California coast, with opportunities to visit Coronado, Balboa Park and the San Diego Zoo, and Cabrillo National Monument on Point Loma.
- A beautiful Century ride to Pines State Park -- 100 miles round-trip to San Clemente along the Pacific, with lots of small beach towns and a pass through Camp Pendleton Marine base.
- Cycle to breathtaking views of San Diego Bay and harbor, the Pacific Ocean, San Diego Mission, Presidio Park and historic Old Town State Park--and even Tijuana, Mexico!
- Our off-roaders are anxious to show off the trails in Penasquitos Canyon Natural Preserve, Rose and San Clemente Canyons, the Laguna Mts. area and Cuyamaca -- all serious mountain biking!
- Exclusive tandem rides led by the local tandem aficionados, with private off-site picnic lunches at secluded ocean coves, for a small extra fee.
- In addition to evening entertainment, comfortable lodging, exhibit halls, and Effective Cycling training, the Rally offers a wide variety of workshops. They cover every aspect of bicycling, from gearing to club leadership, from Century-training to route-marking. Also--don't miss our National Advocacy Conference!

Summer cycling in San Diego: This could be you! For Registration Form contact L.A.W. at (410) 539-3399.

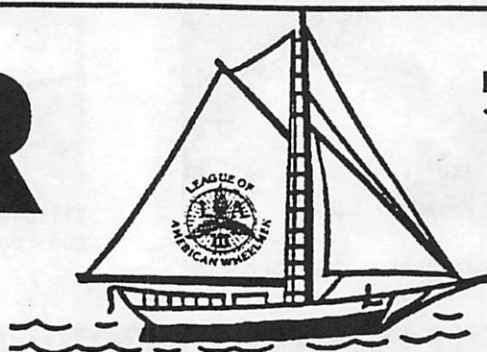
190 W. Ostend, Suite 120, Baltimore MD 21230

# GEAR

# '94

Limited space--  
Register early!

Salisbury, Maryland



July 21-24, 1994

Over 30 favorite rides through tranquil coastal flatlands of Maryland's Eastern Shore are reasons enough to join our family of bicyclists for GEAR '94, July 21-24, 1994.

Salisbury is home to the fabled Seagull Century, and rides will include a special "Cycle to the Sea" series. See the wild ponies on Assateague Island National Seashore, and cross the beautiful Chesapeake Bay on a ferry that has been operating continually for over 300 years.

A variety of technical and leadership workshops led by experts will be topped by a National Advocacy Conference featuring national, state and local bicycling advocates.  
L.A.W.'s GREAT EASTERN RALLY

Registration form from L.A.W., 190 W. Ostend St., #120, Balto., MD 21230-3755, or call (410) 539-3399 for more information.



L.A.W. GEAR '94

SALISBURY



BICYCLE CLUB



## IT'S OVER!!! HERE ARE THE FINAL RESULTS!!

by Joan Segedie

Due to the unseasonably warm and beautiful day, we had 540 riders on this year's St. Pat's Ride! That's almost twice what we had last year(227). This generated a profit of \$1,493.22 versus \$330.98 last year.

This onslaught of riders caused us to open the auxiliary parking lot across the street and scramble like mad to have more cue sheets printed! Rick, at the Wauconda Apple Orchards, ran out of some food items early on, but managed to have something for everyone who wanted to munch on his delicious apple creations.

Our oldest male rider this year was eighty; our oldest female only sixty-six! One female wrote that she was greater than twenty-one so she might have been older than sixty-six, but I doubt it! The youngest male was two and youngest female was four. I'm not sure if they actually rode, but they registered and paid! The next youngest male and female were eleven and fourteen, respectively. I assume that they did ride on their own bikes.

We had seven riders this year from Wisconsin and three from Indiana. Lake Park High School made our ride a field trip with the students told to act as if you are in school!

The majority of the riders heard about the ride through Windy City Sports, the CABDA bike expo, friends, and from participating in previous years. Club members got credit, too: Reid-3, Shannon Braun-2, and Greg Iverson-2. Thanks to you three, and to anyone whose friends didn't write your name on the form for sending riders to us!

Huge thanks go to all of the volunteers who worked that day and/or ahead of time to make this year's St. Pat's ride such a huge success. Thanks also to those I had to turn away because I had so many volunteers that I didn't know what to do with them all!

Also, special thanks to the Wauconda Apple Orchards and Village Cycle Sports for all of their help and support!

This is a quote from last year's St. Pat's article: "Let's all start praying for sun and warmth for next year's St. Pat's Ride!" I think it worked....let's try it again for next year!!



*Safety First from Page 1*

The reflectors on the bike are required by the Consumer Product Safety Commission. New Jersey state law requires (as does Illinois) that bicycles in use at night shall be equipped with a lamp on the front which shall emit a white light. It does not require that the bicycle manufacturer supply that light. And the owners's manual (the thing that most of us never read) does warn that riding at night can be dangerous.

I suppose that they could print a warning on the bike such as the following: WARNING: Riding at night without lights is dangerous. But where to stop? You would also need warnings about the seat—Failure to keep your bottom centered over the saddle may cause damage to sensitive body parts. Or CAUTION: Gravity may cause high speeds when going downhill. Or DANGER: Placing hands in the spokes while in motion can cause premature shortening of the fingers. I personally favor the all-purpose warning: BEWARE: Stupid behavior will be rewarded with negative consequences. The point being that in a risk filled world, you need to look out for yourself. This does not excuse negligence or malice aforethought. It does mean that if you don't know, find out—proceeding on guesswork could lead to a nasty surprise.

This will be my last column as safety director, due to the recent death of my father, and the necessity of devoting additional time to keeping his small business running. I have enjoyed my term as the safety chair. I hope that you have been provoked to thought, and maybe also amused by the information that I have tried to convey.

I will still get out and ride as I need that to keep me sane. So, happy trails, until we meet again, keep the helmet side up and better safe than...

\*\*\*\*\*

## BITS AND PIECES

Be sure to attend our Bike Clinic to be held at the May meeting on May 5th. Various club members will be available to discuss and demonstrate various aspects of bike repair. Learn something you always wanted to know about bike maintenance!!

Rob Schaller is looking for tandem partners to lead a ride on May 28th from McHenry County College. Interested? Call him at 708-854-0153.

Don't forget to attend LORACOL on Saturday, May 14th. This invitational is held in memory of Lenore Goldman, who was one of our members. She was struck by a car in 1992 during one of her PAW tours, which she and her husband, Jerry founded. Proceeds benefit the Association for Late-Deafened Adults. Preregistration is required. Call the HOTLINE-708-475-8641 for further info.

**FOUR GREAT WEEK-END BIKE TRIPS**  
**IN WISCONSIN FOR 1994**

- 1. Baraboo - June 24,25,26**
- 2. Spring Green - August 12,13,14**
- 3. Richland Center - September 2,3,4,5**
- 4. Door County - October 8,9,10**

Please indicate at the bottom of this flyer, which of the trips you would be interested in, and return to Alan S. Berman at 340 Redwing Drive, Deerfield, IL 60015, or call at 541-9248.

Please sign me up for the following week-ends:

Baraboo \_\_\_\_\_

Spring Green \_\_\_\_\_

Richland Center \_\_\_\_\_

Door County \_\_\_\_\_

Name(s) \_\_\_\_\_

Address: \_\_\_\_\_

Telephone: \_\_\_\_\_

